



**EMPRA  ZE**

**Leveraging Employees with HR Benefits**



**EMPRAIZE**  
Leveraging Employees with HR Benefits



**EMPRAIZE** is aimed at enhancing the performance of employees to help accomplish the business goals of the company.

# EMPRAIZE is a comprehensive and affordable HR tech platform



## Employee life cycle

Employee Life Cycle include Hiring Requirments/Interview Details, Generate Employee Documents (unlimited Letters), Generate ID card, E Signed Offer Letters, Off Boarding Formalities and Self Off board etc.



## Employee Information System

Employee Information System include Registration, Update Registration Details, Report scheduling, Probation & Confirmation, Roles & Permissions, Documentation, Salary Components, Single Punch Attendance, Work from Home etc.



## Attendance & Leave

EMPRAIZE provides information regarding employees' attendance and holidays.



## Payroll

Payroll Processing, Investment Declaration, Loans & Advances, F&F, Statutory Reports



## Employee Engagement

EMPRAIZE also helps to ensure that each and every employee is fully committed to the company's mission, goals, and values and that they remain encouraged and inspired to contribute the overall success of the business.



## Helpdesk

EMPRAIZE helpdesk helps teams to Create a query, Reminder on query, Feedback on Solution & Opened Query.



## Organization Structure

EMPRAIZE organization structure include Department dashboard, Extension and Seat Number Details & Flow Chart.



## Inventory Management Solution

Inventory Management Solution include Purchase Orders, Manage Request, Create vendor Registration, Genrate Inventory Request, Generate General Request, Inventory issuance form, Project Correct Status in System etc.



## Performance Management

Performance management includes Monthly Goal Management, Weekly Goal Management, Appraisals & Salary Recommendations.



## Time Management

Time Management includes Time Reporting, Task Reminder.



## Reimbursement

Reimbursement includes Domestic & International Travel, Different type of claims, Unlimited bill uploads, Multi layer Approval.



## Company Documents Upload

You may have to submit documents to your HR team often. With EMPRAIZE, you can simply upload the documents and your HR will receive it.



## Company Policy Updation

The company policy documents are always available on EMPRAIZE, you can refer the docs whenever you want.



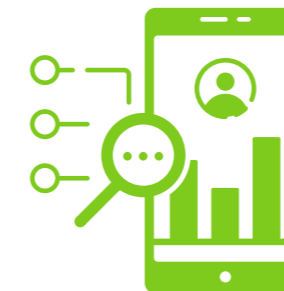
## Module Wise Dashboard

The EMPRAIZE Dashboard module ensures better visualization of employee and organization-related data such as Employee Leaves, number of payslips, timesheets, and contracts generated for that particular employee.



## Survey & Acknowledgment

An automated survey management software is the ideal tool that organisations need in order to successfully conduct employee surveys. EMPRAIZE is an example of a survey management software that comes with a dedicated module for planning and executing surveys.



## Package Tracking Details

EMPRAIZE is software designed to help businesses meet core HR needs and improve the productivity of both managers and employees.



## Invoice Generation

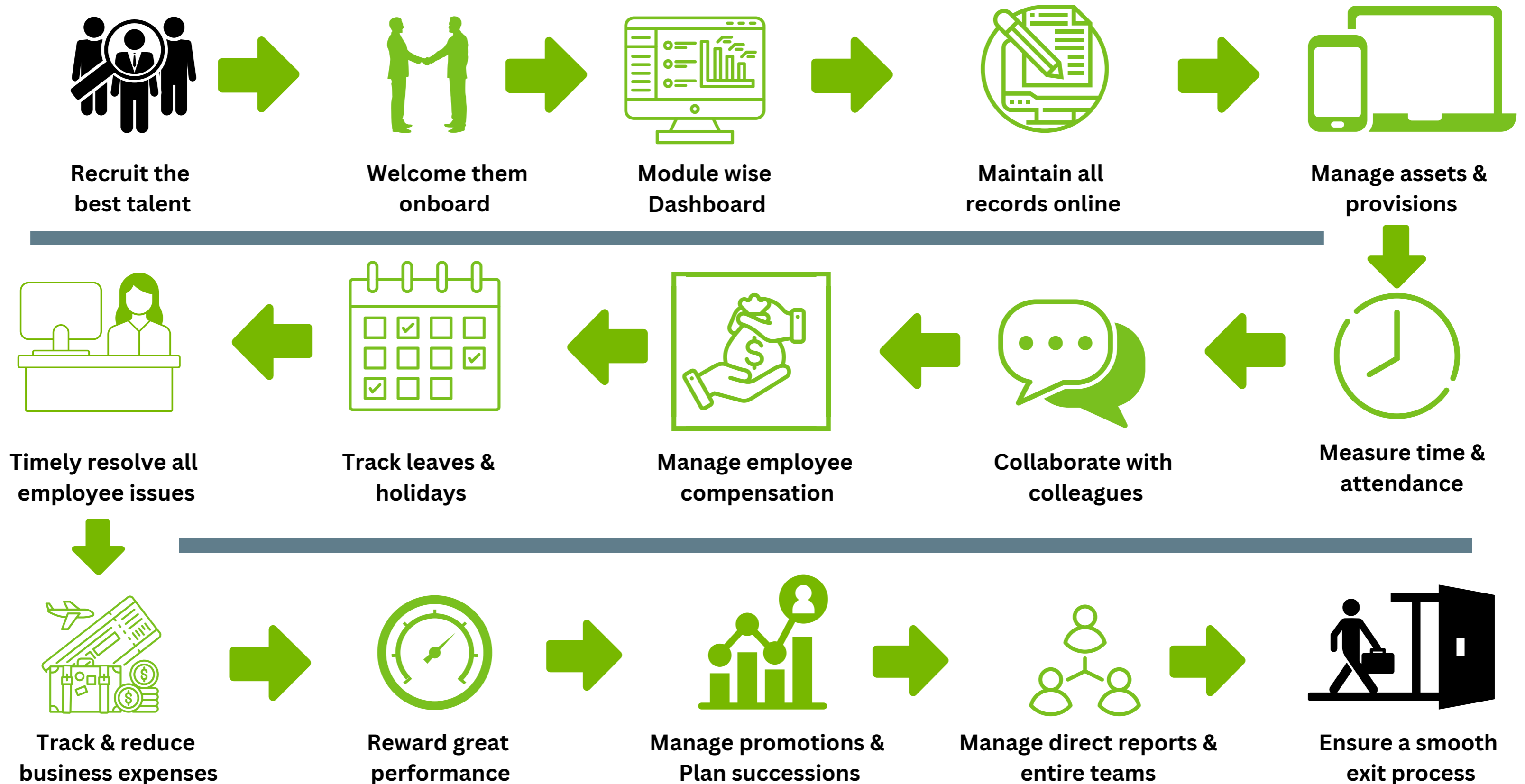
EMPRAIZE is a solution which helps taxpayers to generate invoices on behalf of the sellers with accurate details of products and tax rates mentioned in the database.



## Employee Self Service

Employee self-service (ESS) is a widely used human resources technology that enables employees to perform many job-related functions, such as applying for reimbursement, updating personal information and accessing company benefits information.

# EMPRAIZE helps automate each phase of the employee lifecycle

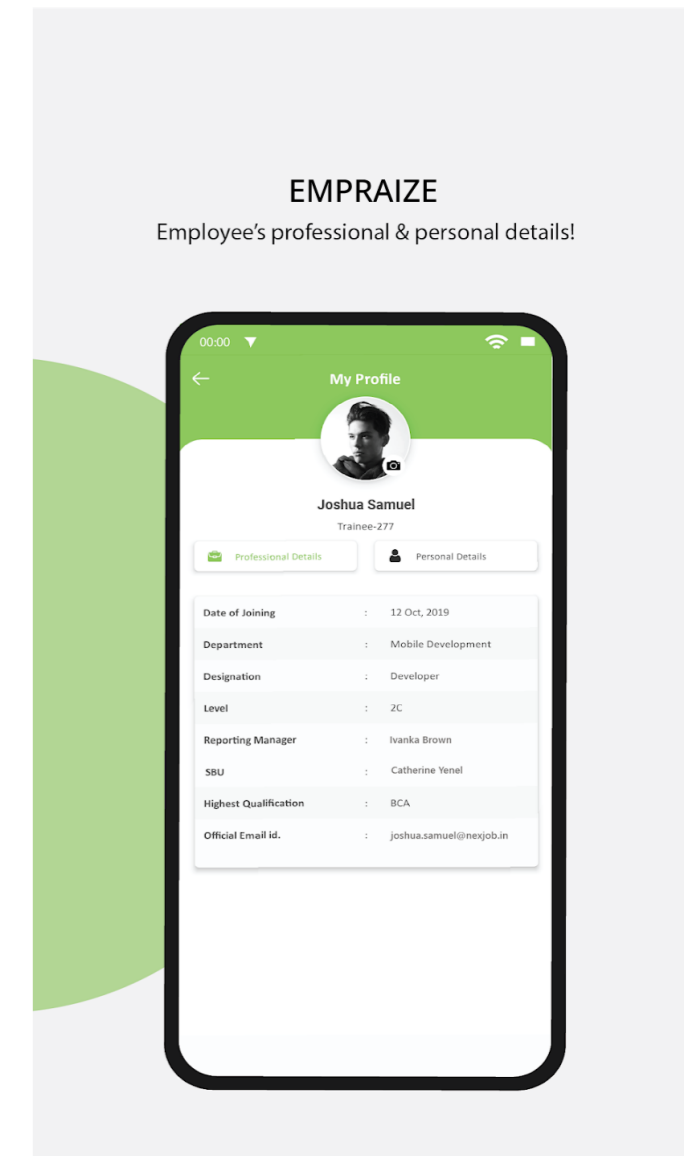
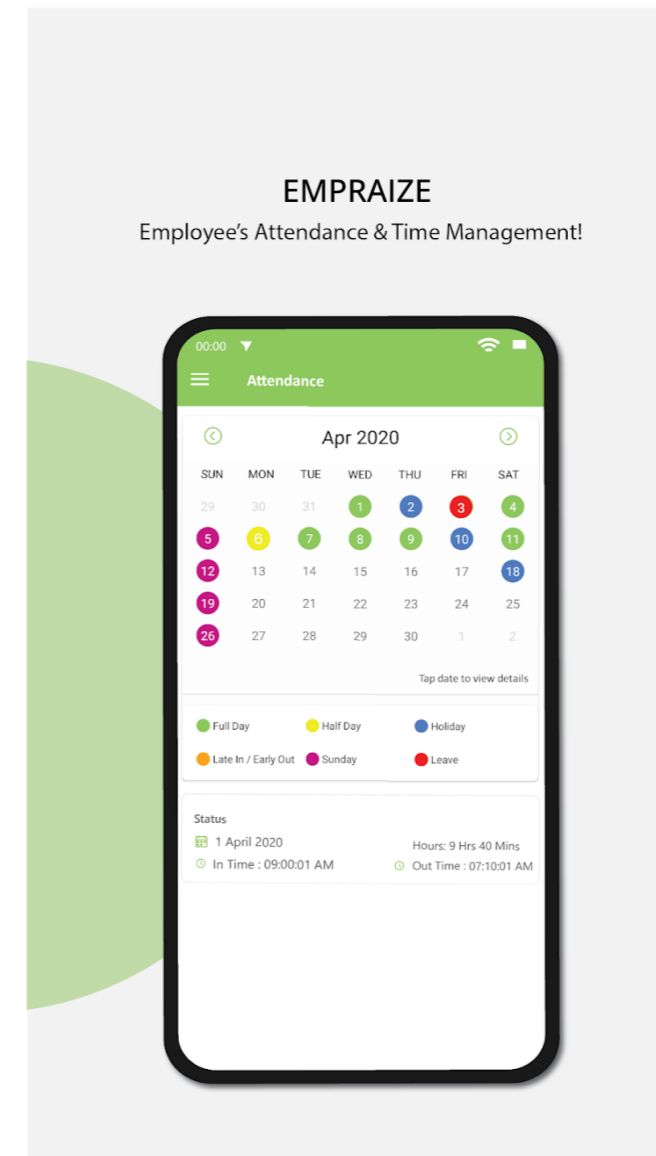
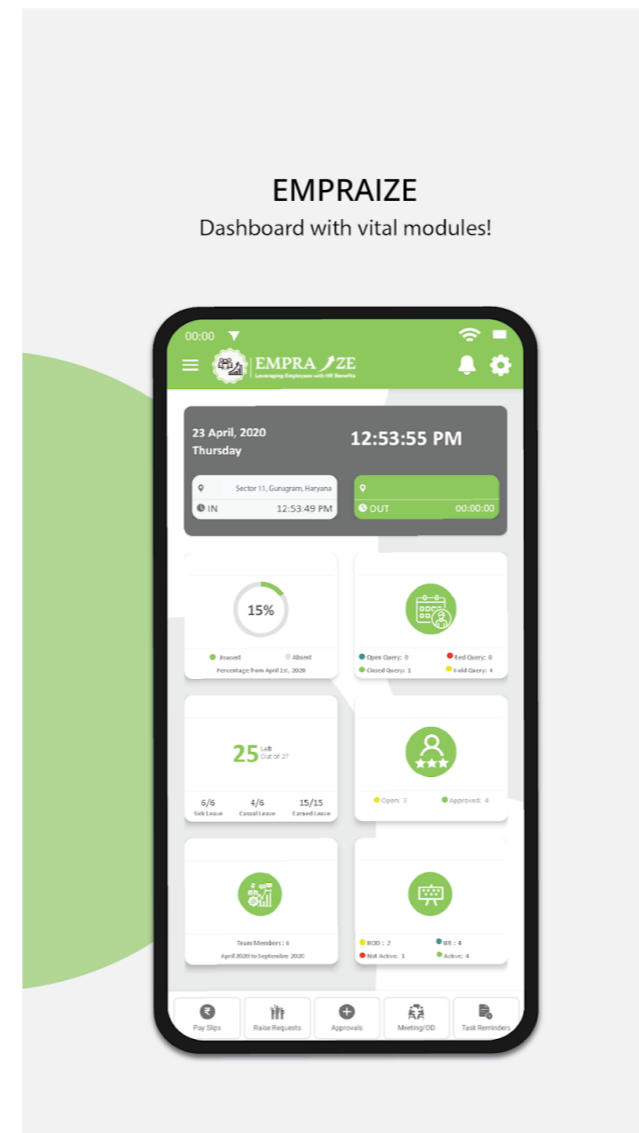
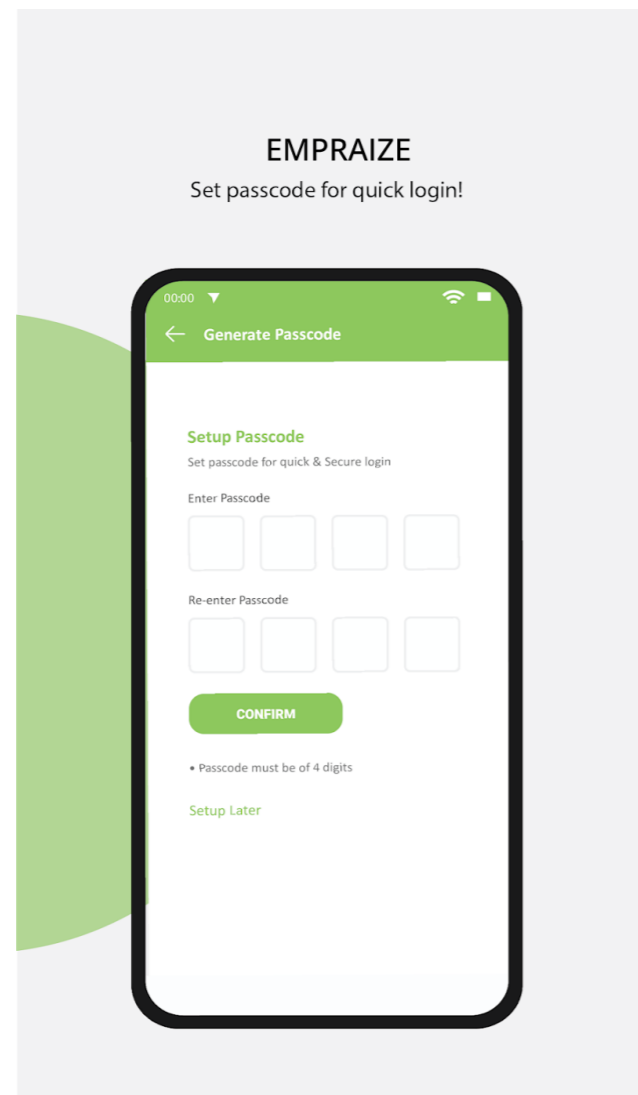
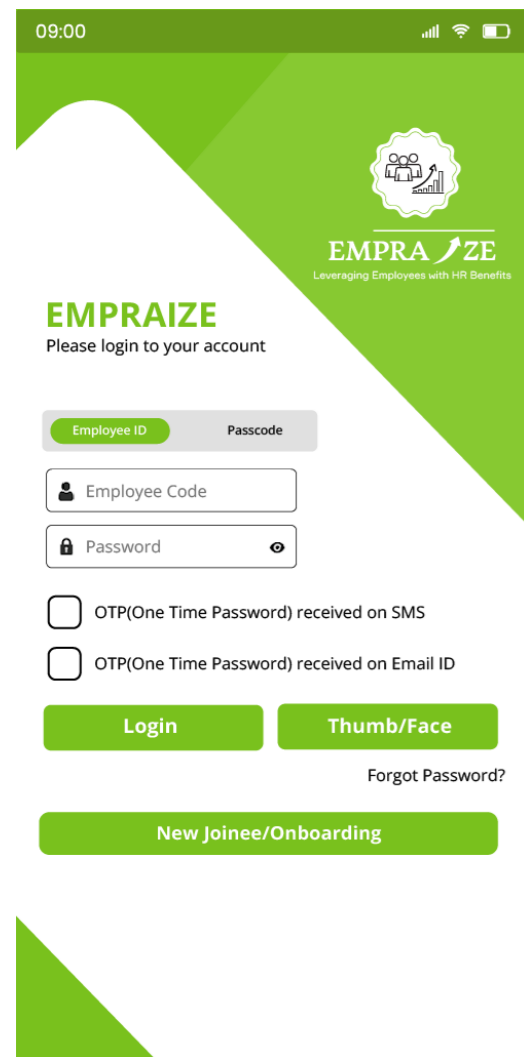




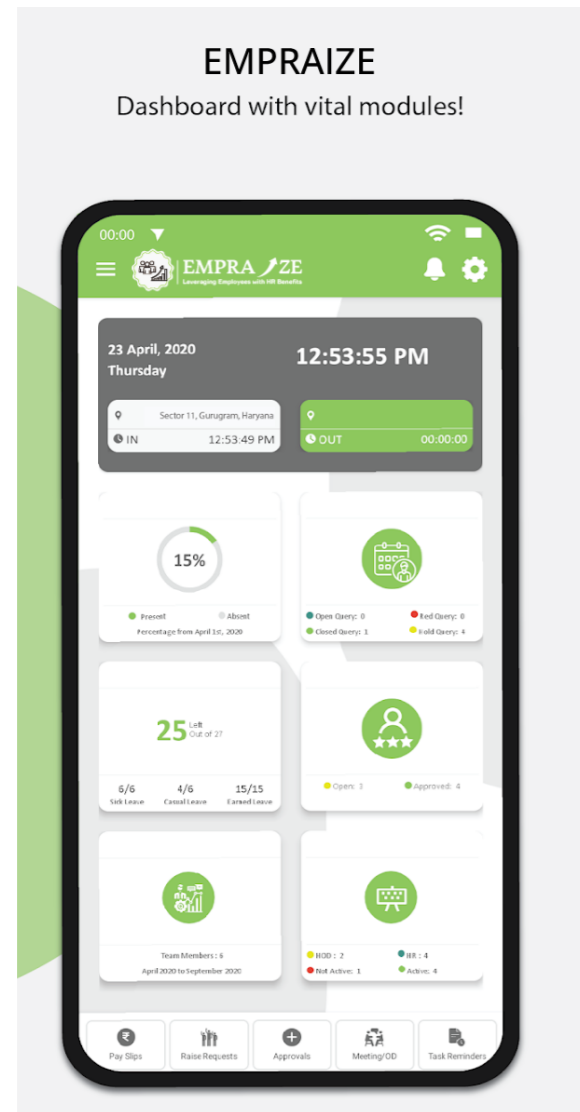
# EMPRAIZE

Leveraging Employees with HR Benefits

# MOBILE APPLICATION

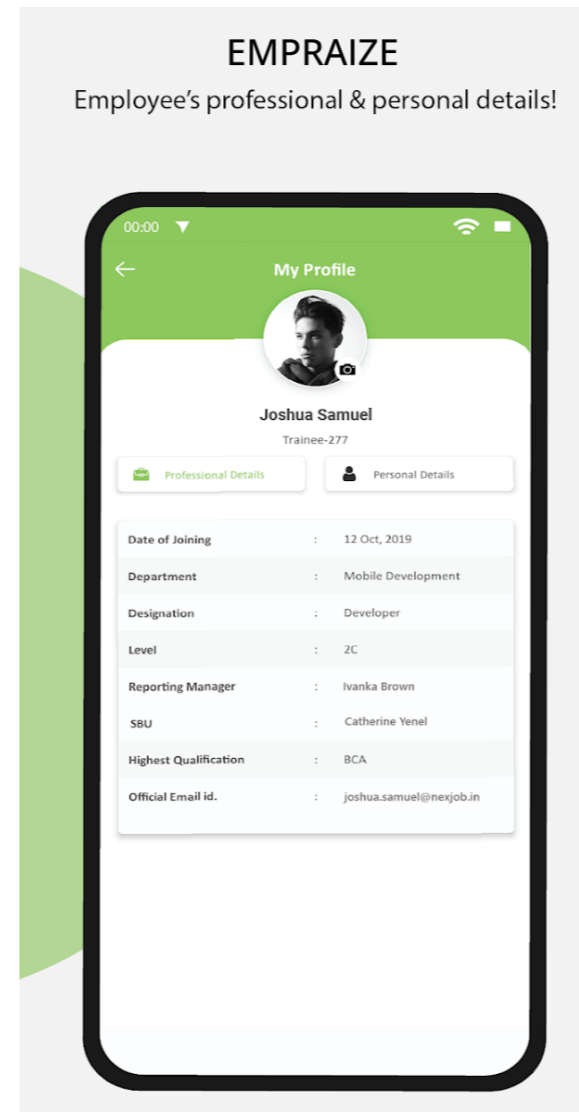


# App Screens



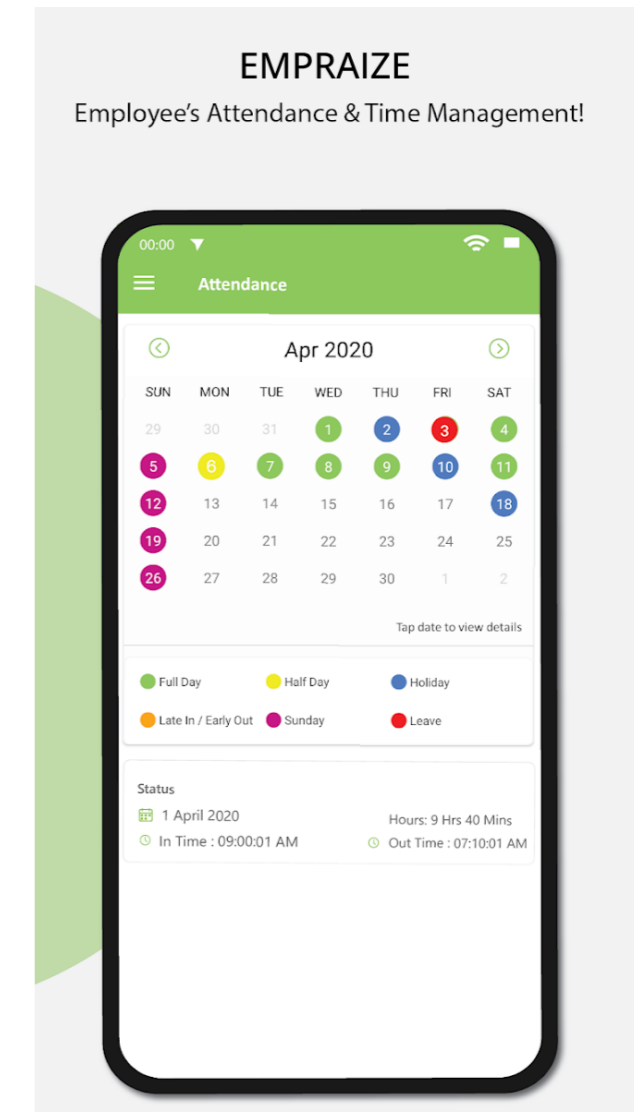
## Dashboard

Punch-in and out, attendance approvals, goal sheets, Task reminder and many more widgets available.



## Employee profile

Employee can edit/upload their profile from this screen



## Attendance \$ Leave Details

Employee can plan his/her leaves and plan his work hours accordingly

and many more screens.....

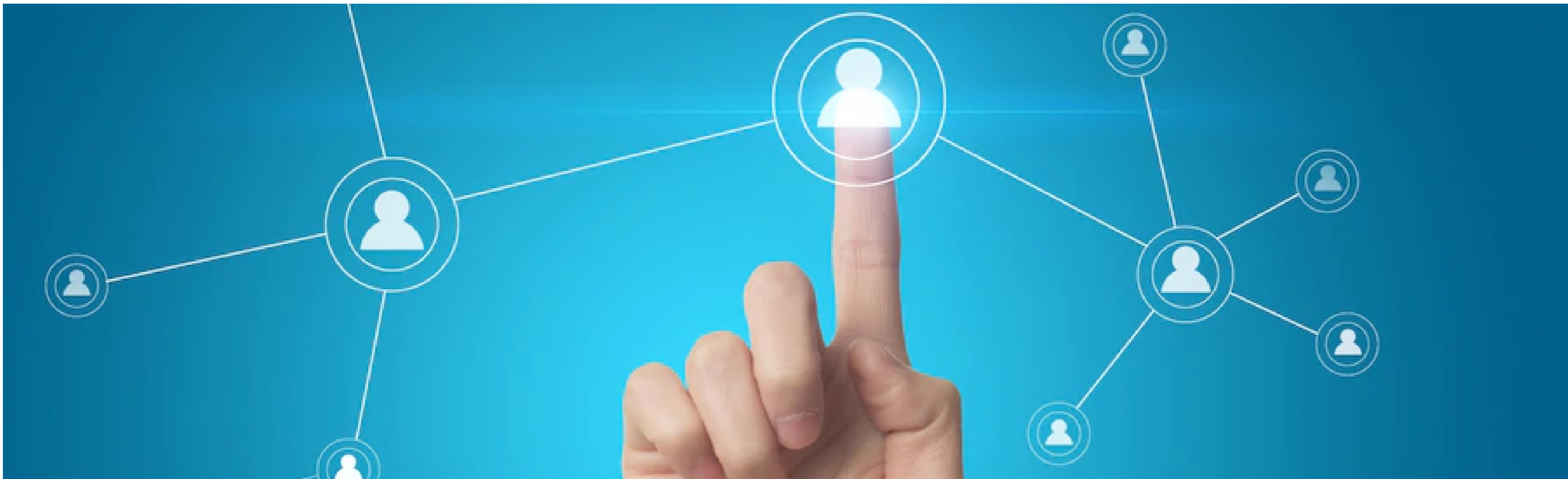


The dashboard features a dark blue sidebar with navigation options: Dashboard, Users - Management, Company Profile - Tables, Package Tracking, Self-Service Feedback, Service Center IT Help Desk & Self-Service Portal, The Investment Declaration, Leave Management System, Loan Management System, Payroll, Performance Management, and Offboard. The main content area includes a birthday greeting for Mahesh, Aak Kumar, Sangeeta Khansare, and Mahes. Below this are eight request and query cards: Claims Request (0), Leaves Request (0), Loan Request (0), Product Request (0), Open Queries (3), Closed Queries (3), Hold Queries (0), and Paid Queries (0). A calendar for January 2023 is visible on the right, along with a 'REPORTS' section and a 'NOTICE BOARD' section.

# DASHBOARD

HERE, you can view majority of Employee information modules like Request raised, profile, drawer, attendance status with color code & many more.....





# Our Presence

## DELHI

B-25, Somdutt Chamber -1  
Bhikaji Cama Place, New  
Delhi 110066, India



: +91-9910253260



: [Support@pioneerresolutions.in](mailto:Support@pioneerresolutions.in)

## GURGAON

169/8,Pioneer E Solutions (P) LTD,  
Pioneer Tower, Sector 11, Model  
Town, Gurgaon 122001, India



: 0124-7178608



: [Support@pioneerresolutions.in](mailto:Support@pioneerresolutions.in)

## UK

27, EastBrook Hall, Chapel Street,  
Leeds Road, Bradford,  
BD15AE, United Kingdom



: +44-7459417252




: [Sales@pioneerresolutions.co.uk](mailto:Sales@pioneerresolutions.co.uk)



**THANK  
YOU**

**Contact Us For Demo-**

 - +91 9549068068

 - [Support@emp्राize.com](mailto:Support@emp्राize.com)

 - [www.emp्राize.com](http://www.emp्राize.com)